

# \$360,000 - 13208 128 Avenue, Edmonton

MLS® #E4457608

**\$360,000**

4 Bedroom, 2.00 Bathroom, 1,095 sqft  
Single Family on 0.00 Acres

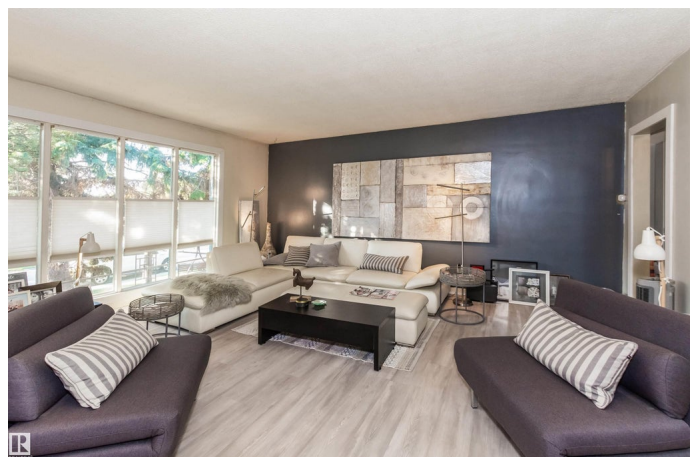
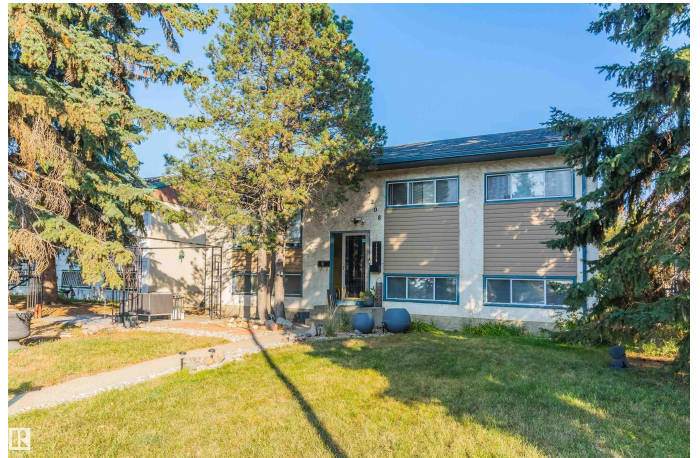
Athlone, Edmonton, AB

Large \*\*50' x 100' \*\*lot with back-alley access  
â€” perfect for \*\*first-time buyers or  
investors\*\*. Bright bi-level with 4 bedrooms,  
\*\*fully finished basement\*\* and \*\*3 rear  
parking stalls. Upgrades include  
high-efficiency furnace (\*2019), hot water tank  
(\*2017), newer roof (within 2 yrs), smart  
thermostat, and \*\*central A/C. Raised private  
deck, fully fenced yard \*\*feature entrance with  
chandelier, \*\*upgraded laminate, spacious  
kitchen with stainless appliances, \*\*pantry &  
lots of cabinetry. Close to schools, shopping,  
EPL library and restaurants.

Built in 1957

## Essential Information

MLS® #	E4457608
Price	\$360,000
Bedrooms	4
Bathrooms	2.00
Full Baths	2
Square Footage	1,095
Acres	0.00
Year Built	1957
Type	Single Family
Sub-Type	Detached Single Family
Style	Bi-Level
Status	Active



## Community Information

Address	13208 128 Avenue
Area	Edmonton
Subdivision	Athlone
City	Edmonton
County	ALBERTA
Province	AB
Postal Code	T5L 3H2

## Amenities

Amenities	On Street Parking, Air Conditioner, Carbon Monoxide Detectors, Deck, Detectors Smoke, Hot Water Natural Gas
Parking Spaces	3
Parking	2 Outdoor Stalls, Rear Drive Access

## Interior

Appliances	Air Conditioning-Central, Alarm/Security System, Dishwasher-Built-In, Dryer, Hood Fan, Oven-Microwave, Refrigerator, Storage Shed, Stove-Electric, Washer
Heating	Forced Air-1, Natural Gas
Stories	2
Has Basement	Yes
Basement	Full, Finished

## Exterior

Exterior	Wood, Stucco, Vinyl
Exterior Features	Back Lane, Fenced, Playground Nearby, Schools, Shopping Nearby, Subdividable Lot
Roof	Asphalt Shingles
Construction	Wood, Stucco, Vinyl
Foundation	Concrete Perimeter

## Additional Information

Date Listed	September 11th, 2025
Days on Market	24
Zoning	Zone 01

DATA IS DEEMED RELIABLE BUT IS NOT GUARANTEED ACCURATE BY THE REALTORS® ASSOCIATION OF EDMONTON. COPYRIGHT 2025 BY THE REALTORS® ASSOCIATION OF EDMONTON. ALL RIGHTS RESERVED. Trademarks are owned or controlled by the Canadian Real Estate Association (CREA) and identify real estate professionals who are members of CREA (REALTOR®, REALTORS®) and/or the quality of services they provide (MLS®, Multiple Listing Service®).

Listing information last updated on October 5th, 2025 at 4:47am MDT