

## \$387,998 - 4019 Orchards Drive, Edmonton

MLS® #E4444384

### \$387,998

3 Bedroom, 2.50 Bathroom, 1,214 sqft  
Condo / Townhouse on 0.00 Acres

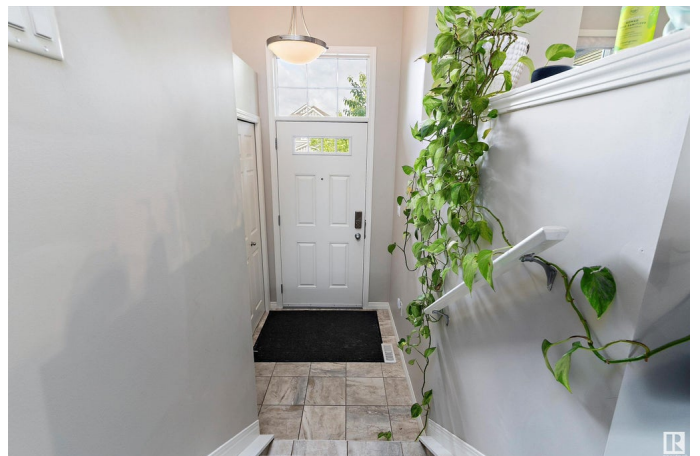
The Orchards At Ellerslie, Edmonton, AB

Welcome to the Orchards in this 1214 square feet above ground, 3 bed 3 bath townhome! In a great location, right across from the park and visitor parking and an outward facing front yard. This home includes a fully finished 213 square foot lower level that includes a den and laundry room as well as a fully finished and painted garage. In this home you will find an open-concept main floor where a gourmet kitchen featuring a plethora of cabinets and counter space and stainless appliances. Your stylish living room is family functional and a charming fireplace makes for a great place to gather around with your tribe! On the second floor, you'll find a 4pc family bathroom, and three spacious bedrooms including a master retreat where you can rest and relax or get ready for the day in your own ensuite! Additionally, the oversized single garage will keep you warm without having to go outside.

Built in 2015

### Essential Information

MLS® #	E4444384
Price	\$387,998
Bedrooms	3
Bathrooms	2.50
Full Baths	2
Half Baths	1



Square Footage	1,214
Acres	0.00
Year Built	2015
Type	Condo / Townhouse
Sub-Type	Townhouse
Style	2 Storey
Status	Active

### Community Information

Address	4019 Orchards Drive
Area	Edmonton
Subdivision	The Orchards At Ellerslie
City	Edmonton
County	ALBERTA
Province	AB
Postal Code	T6C 1V2

### Amenities

Amenities	No Smoking Home
Parking Spaces	2
Parking	Double Garage Attached

### Interior

Interior Features	ensuite bathroom
Appliances	Dishwasher-Built-In, Dryer, Refrigerator, Stove-Electric, Washer, Window Coverings
Heating	Forced Air-1, Natural Gas
Fireplace	Yes
Fireplaces	Wall Mount
Stories	3
Has Basement	Yes
Basement	See Remarks, Finished

### Exterior

Exterior	Wood, Vinyl
Exterior Features	Back Lane, Fenced, Landscaped, Playground Nearby, Public Transportation, Schools, Shopping Nearby
Roof	Asphalt Shingles
Construction	Wood, Vinyl

Foundation                      Concrete Perimeter

**School Information**

Elementary                      Jan Reimer  
Middle                              Jan Reimer  
High                                J Percy Page

**Additional Information**

Date Listed                      June 26th, 2025  
Zoning                              Zone 53  
HOA Fees                         449.99  
HOA Fees Freq.                Annually  
Condo Fee                        \$259

DATA IS DEEMED RELIABLE BUT IS NOT GUARANTEED ACCURATE BY THE REALTORS® ASSOCIATION OF EDMONTON. COPYRIGHT 2025 BY THE REALTORS® ASSOCIATION OF EDMONTON. ALL RIGHTS RESERVED.Trademarks are owned or controlled by the Canadian Real Estate Association (CREA) and identify real estate professionals who are members of CREA (REALTOR®, REALTORS®) and/or the quality of services they provide (MLS®, Multiple Listing Service®)  
Listing information last updated on June 26th, 2025 at 8:32pm MDT