

\$539,900 - 28 Springhaven Close, Spruce Grove

MLS® #E4444306

\$539,900

3 Bedroom, 3.50 Bathroom, 1,770 sqft

Single Family on 0.00 Acres

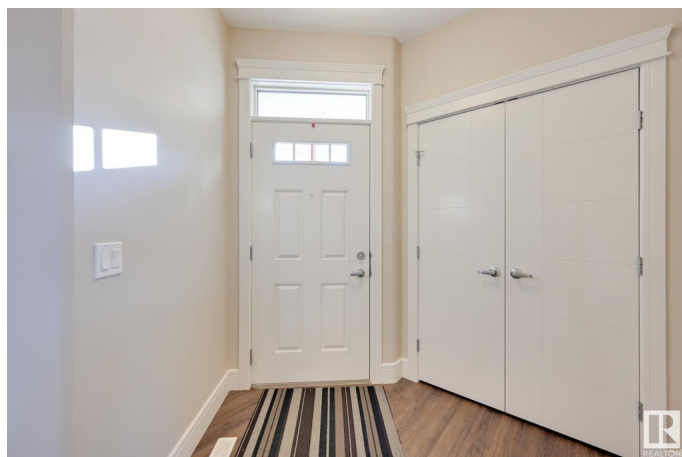
Spruce Ridge, Spruce Grove, AB

Welcome to this inviting single-family home that blends comfort, function, and style, perfect for growing families or anyone looking for extra space. Step inside to a bright and open main floor featuring a cozy living room, a welcoming dining area, a convenient half bathroom, and a modern kitchen complete with stainless steel appliances. Upstairs, you'll find three spacious bedrooms and two full bathrooms, including a private ensuite in the serene primary suite. A generous bonus room adds flexibility for a home office, playroom, or cozy movie nights. The fully finished basement offers even more space with a large second living area and a 4-piece bathroom, ideal for guests or family hangouts. Outside, enjoy summer days on the sunny deck and make use of the large backyard and handy storage shed. With a double attached garage and close proximity to schools, shopping, and essential amenities, this is a place youâ€™™ll be proud to call home!

Built in 2017

Essential Information

MLS® #	E4444306
Price	\$539,900
Bedrooms	3
Bathrooms	3.50
Full Baths	3



Half Baths	1
Square Footage	1,770
Acres	0.00
Year Built	2017
Type	Single Family
Sub-Type	Detached Single Family
Style	2 Storey
Status	Active

Community Information

Address	28 Springhaven Close
Area	Spruce Grove
Subdivision	Spruce Ridge
City	Spruce Grove
County	ALBERTA
Province	AB
Postal Code	T7X 0V1

Amenities

Amenities	See Remarks
Parking Spaces	4
Parking	Double Garage Attached

Interior

Interior Features	ensuite bathroom
Appliances	Dishwasher-Built-In, Dryer, Garage Control, Garage Opener, Refrigerator, Storage Shed, Stove-Electric, Washer
Heating	Forced Air-1, Natural Gas
Stories	3
Has Basement	Yes
Basement	Full, Finished

Exterior

Exterior	Wood, Vinyl
Exterior Features	Playground Nearby, Public Swimming Pool, Public Transportation, Schools, Shopping Nearby, See Remarks
Roof	Asphalt Shingles
Construction	Wood, Vinyl
Foundation	Concrete Perimeter

School Information

Elementary	Brookwood School
Middle	Greystone Centennial
High	Spruce Grove Composite

Additional Information

Date Listed	June 25th, 2025
Days on Market	3
Zoning	Zone 91

DATA IS DEEMED RELIABLE BUT IS NOT GUARANTEED ACCURATE BY THE REALTORS® ASSOCIATION OF EDMONTON. COPYRIGHT 2025 BY THE REALTORS® ASSOCIATION OF EDMONTON. ALL RIGHTS RESERVED.Trademarks are owned or controlled by the Canadian Real Estate Association (CREA) and identify real estate professionals who are members of CREA (REALTOR®, REALTORS®) and/or the quality of services they provide (MLS®, Multiple Listing Service®)

Listing information last updated on June 27th, 2025 at 9:47pm MDT