

\$438,000 - 12231 152a Avenue, Edmonton

MLS® #E4443511

\$438,000

5 Bedroom, 2.50 Bathroom, 1,263 sqft

Single Family on 0.00 Acres

Caernarvon, Edmonton, AB

Welcome to this beautifully spacious 5-bedroom bi-level located in the heart of sought after Caernarvon. Sitting on a generous pie-shaped lot, this home offers exceptional space, flexibility & investment potential. Upstairs, you'll find a bright & open mainfloor featuring 3 spacious bedrooms; the primary includes a 2-piece ensuite. Complete with the 4pc main bathroom & well-appointed kitchen with plenty of cabinetry and natural light. The inviting living & dining areas create the perfect setting for entertaining or relaxing with family. Downstairs, the fully finished basement offers 2 additional bedrooms, second full kitchen, large living area, & 2nd 4pc bathroom; with separate entrance at the back door the lower level is perfect for multigenerational living or continue using as a suite. Step outside to a huge backyard, offering endless possibilities with the patio, firepit and huge Double Garage for storage or workshop! A new High School is being built within walking distance to better serve families!

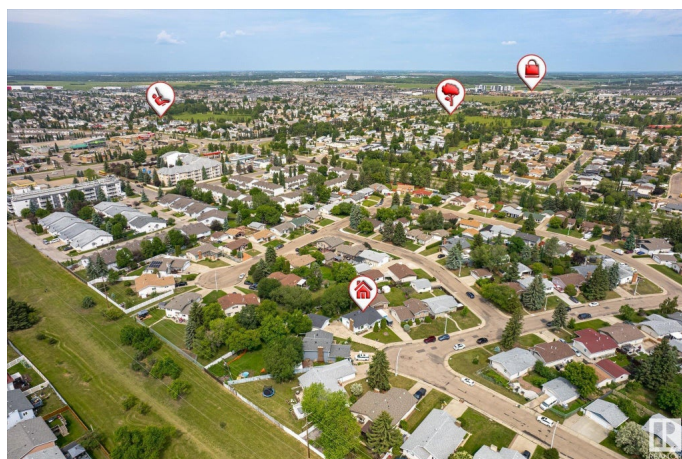
Built in 1976

Essential Information

MLS® # E4443511

Price \$438,000

Bedrooms 5



Bathrooms	2.50
Full Baths	2
Half Baths	1
Square Footage	1,263
Acres	0.00
Year Built	1976
Type	Single Family
Sub-Type	Detached Single Family
Style	Bi-Level
Status	Active

Community Information

Address	12231 152a Avenue
Area	Edmonton
Subdivision	Caernarvon
City	Edmonton
County	ALBERTA
Province	AB
Postal Code	T5X 1P9

Amenities

Amenities	Off Street Parking, Detectors Smoke, Fire Pit, Hot Water Natural Gas, No Animal Home, No Smoking Home, Patio
Parking Spaces	5
Parking	Double Garage Detached, Insulated, Parking Pad Cement/Paved

Interior

Interior Features	ensuite bathroom
Appliances	Dryer, Hood Fan, Microwave Hood Fan, Refrigerator, Washer, Stoves-Two, Dishwasher-Two
Heating	Forced Air-1, Natural Gas
Fireplace	Yes
Fireplaces	Brick Facing
Stories	2
Has Basement	Yes
Basement	Full, Finished

Exterior

Exterior	Wood, Vinyl
----------	-------------

Exterior Features	Landscaped, No Back Lane, Private Setting, Schools, Shopping Nearby, Partially Fenced
Roof	Asphalt Shingles
Construction	Wood, Vinyl
Foundation	Concrete Perimeter

School Information

Elementary	Caernarvon elementary
------------	-----------------------

Additional Information

Date Listed	June 20th, 2025
Days on Market	2
Zoning	Zone 27

DATA IS DEEMED RELIABLE BUT IS NOT GUARANTEED ACCURATE BY THE REALTORS® ASSOCIATION OF EDMONTON. COPYRIGHT 2025 BY THE REALTORS® ASSOCIATION OF EDMONTON. ALL RIGHTS RESERVED. Trademarks are owned or controlled by the Canadian Real Estate Association (CREA) and identify real estate professionals who are members of CREA (REALTOR®, REALTORS®) and/or the quality of services they provide (MLS®, Multiple Listing Service®)

Listing information last updated on June 22nd, 2025 at 2:47pm MDT