

\$499,000 - 436 29 Street, Edmonton

MLS® #E4437523

\$499,000

3 Bedroom, 2.50 Bathroom, 1,613 sqft

Single Family on 0.00 Acres

Alces, Edmonton, AB

Welcome to this beautiful home in a vibrant community, offering over 1,600 sq. ft. of thoughtfully designed living space. Featuring 3 spacious bedrooms, 2.5 bathrooms, a versatile bonus room, and an open-concept layout with stainless steel appliances. The SEPARATE SIDE ENTRY leads to an unfinished basement with two windows—perfect for developing a legal 2-bedroom suite. A fantastic opportunity for both families and investors!

Built in 2024

Essential Information

MLS® #	E4437523
Price	\$499,000
Bedrooms	3
Bathrooms	2.50
Full Baths	2
Half Baths	1
Square Footage	1,613
Acres	0.00
Year Built	2024
Type	Single Family
Sub-Type	Detached Single Family
Style	2 Storey
Status	Active

Community Information



Address 436 29 Street
Area Edmonton
Subdivision Alces
City Edmonton
County ALBERTA
Province AB
Postal Code T6X 3E7

Amenities

Amenities Ceiling 9 ft., Deck, Hot W
Smoking Home, See Remark
Parking Parking Pad Cement/Paved

Interior

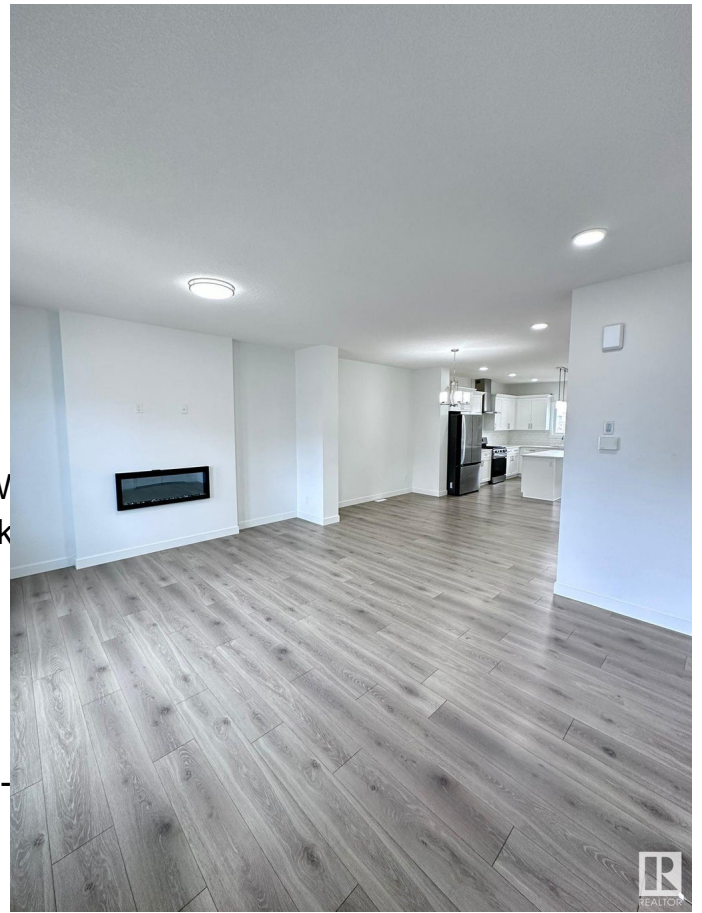
Interior Features ensuite bathroom
Appliances Dryer, Refrigerator, Stove-
Remarks
Heating Forced Air-1, Natural Gas
Fireplace Yes
Fireplaces Wall Mount
Stories 2
Has Basement Yes
Basement Full, Unfinished

Exterior

Exterior Wood, Vinyl
Exterior Features Back Lane, Golf Nearby, P
Remarks
Roof Asphalt Shingles
Construction Wood, Vinyl
Foundation Concrete Perimeter

Additional Information

Date Listed May 21st, 2025
Days on Market 57
Zoning Zone 53



DATA IS DEEMED RELIABLE BUT IS NOT GUARANTEED ACCURATE BY THE REALTORS® ASSOCIATION OF EDMONTON. COPYRIGHT 2025 BY THE REALTORS® ASSOCIATION OF EDMONTON. ALL RIGHTS RESERVED. Trademarks are owned or controlled by the Canadian Real Estate Association (CREA) and identify real estate professionals who are members of CREA (REALTOR®, REALTORS®) and/or the quality of services they

provide (MLS® , Multiple Listing Service®)

Listing information last updated on July 17th, 2025 at 12:17pm MDT