

\$305,000 - 76 13320 124 Street, Edmonton

MLS® #E4432068

\$305,000

2 Bedroom, 1.00 Bathroom, 1,052 sqft

Condo / Townhouse on 0.00 Acres

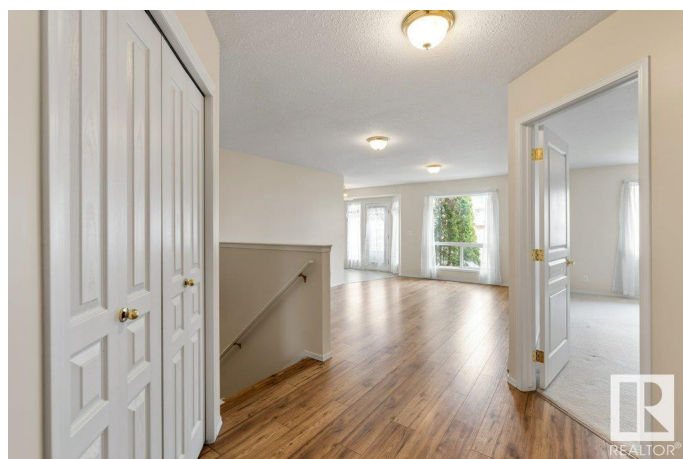
Kensington, Edmonton, AB

Welcome to Shepherdâ€™s Meadow â€“ A 55+ Adult Community! This 974 sq ft bungalow offers comfort, convenience, and a true sense of community. It features 2 generous bedrooms, a full bathroom, an unfinished basement, and a double attached garage. The primary bedroom includes a spacious walk-in closet. Large windows, fresh paint, and new flooring make this home bright and inviting. The white gourmet kitchen and dinette open to patio doors leading to a deckâ€“perfect for relaxing or entertaining. Convenient main floor laundry is located just off the garage entry. Within walking distance to public transportation and shopping. Enjoy access to fantastic amenities including a restaurant, social lounge, fitness room, library, and chapel. Come experience the warm and peaceful lifestyle at Shepherdâ€™s Meadow!

Built in 1998

Essential Information

MLS® #	E4432068
Price	\$305,000
Bedrooms	2
Bathrooms	1.00
Full Baths	1
Square Footage	1,052
Acres	0.00



Year Built	1998
Type	Condo / Townhouse
Sub-Type	Half Duplex
Style	Bungalow
Status	Active

Community Information

Address	76 13320 124 Street
Area	Edmonton
Subdivision	Kensington
City	Edmonton
County	ALBERTA
Province	AB
Postal Code	T5L 5B7

Amenities

Amenities	Deck, Detectors Smoke
Parking	Double Garage Attached

Interior

Appliances	Dishwasher-Built-In, Dryer, Garage Control, Garage Opener, Hood Fan, Refrigerator, Stove-Electric, Washer, Window Coverings
Heating	Forced Air-1, Natural Gas
Stories	1
Has Basement	Yes
Basement	Full, Unfinished

Exterior

Exterior	Wood, Stucco
Exterior Features	Fenced, Flat Site, Landscaped, No Through Road, Private Setting, Public Transportation, Shopping Nearby, See Remarks
Roof	Asphalt Shingles
Construction	Wood, Stucco
Foundation	Concrete Perimeter

Additional Information

Date Listed	April 22nd, 2025
Days on Market	11
Zoning	Zone 01

Condo Fee \$375

DATA IS DEEMED RELIABLE BUT IS NOT GUARANTEED ACCURATE BY THE REALTORS® ASSOCIATION OF EDMONTON. COPYRIGHT 2025 BY THE REALTORS® ASSOCIATION OF EDMONTON. ALL RIGHTS RESERVED.Trademarks are owned or controlled by the Canadian Real Estate Association (CREA) and identify real estate professionals who are members of CREA (REALTOR®, REALTORS®) and/or the quality of services they provide (MLS®, Multiple Listing Service®)

Listing information last updated on May 3rd, 2025 at 6:47am MDT